

# CHANNEL ISLANDS WATERFRONT HOMES NEWS

Prepared for the Channel Islands Waterfront Homes Owners Association

November December 2014



What is a FOB? Pronounced like Bob

A keyless entry device that will replace the lobby and pedestrian garage keys.



## NEW FOBS FOR ENTRY

The new electronic FOBS are now being used in place of our old door key system. The FOBS will gain owners and tenants access to the front lobby and the pedestrian garage doors. The common area Card will

still be used to gain access to the drive-in garage entrance and the Clubhouse. If you have tenants, please be sure they are given the replacement FOB immediately because at some point the old key system will become obsolete. If you need extra FOBS, contact Manager Sara Taylor at Gold Coast Management [saraht@goldcoastmgt.com](mailto:saraht@goldcoastmgt.com), phone 805-499-7800 or Fax: 805-499-7889

To use the FOB, simply hold the device in front of the FOB reader to the left of the lobby door. The left front lobby door will unlock automatically and remain so for about 15 seconds. The light on the FOB reader is red when the door is locked and green when unlocked. Hint: Hold the FOB in the center of the card reader not at top where the light is. The FOB reader for pedestrian garage doors are to the right of the door.



## DON'T WELCOME STRANGERS INTO OUR BUILDINGS

The new FOB readers will add an extra layer of security to our property because each key is assigned to an owner allowing management to know

who is coming into the buildings and garage. In the event a FOB is lost or stolen it can be immediately deactivated by HOA personnel. If you lose your FOB please notify management immediately. With that understanding, our building security only works if we enforce it. Lobby doors are meant to be shut and locked at all times. If you see the door has been left open, close it. Don't open the door for people that you know don't live or work here. They can use the intercom to call the person they are visiting. If you notice a door that is not working properly notify management right away.



## THE BEST VIEW OF THE PARADE OF LIGHTS IS IN YOUR LIVING ROOM!

The 49<sup>th</sup> Annual Parade of Lights daylong celebration is Saturday December 13 from 10 a.m. – 8 p.m. THE PARADE STARTS AT 7:00 p.m. This year's theme: "A Buccaneer's Holiday."

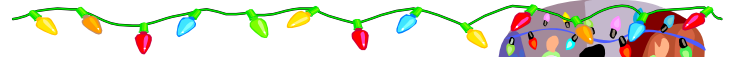
**FRIDAY NIGHT Dec. 12 - Don't miss the spectacular Dock Decoration Contest** starting at 7 p.m. Our local "Do It Best" and Frank Laza of Central Coast Electric Boats are this year's sponsors. This is a "don't miss it" opportunity and just another reason that Waterfront Homeowners boast "It's the View" when asked why they enjoy living here!



## GET YOUR PARKING PASSES EARLY

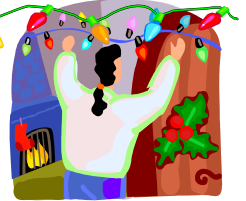
Anacapa Isle Marina security will be blocking all entrances to our parking lot by 9:00 am Saturday morning December 13 – leaving only one entrance open until 3:00 pm. Condo residents, marina tenants and those with a parking pass will be the only ones granted access after 3:00 pm.

**Residents can show their key card but your guests will need a Parking Pass to get in the lot.** Passes will be available from the marina office starting the weekend after Thanksgiving -Two passes each per condo. This is the one day a year our lot fills up and it is first come-first serve so guest space is not guaranteed. Please note: No RVs, Campers or trailers of any kind will be allowed in the lot.



## ANNUAL HOLIDAY BALCONY DECORATION CONTEST

The Annual "It's the View" Holiday Competition for the best decorated balcony is coming soon. This year, judging will take place take place between 7 - 8 p.m. on Saturday Dec. 13th. *All*



*balconies will be judged* and the winners will be awarded fun prizes as well as "bragging rights."

Categories include: BEST OVERALL, MOST CREATIVE and MOST WHIMSICAL. The contest is sponsored by Susan O'Brien of Sotheby's International Realty. For more information contact Susan at (805) 207-9579 or [BeachandMarina@att.net](mailto:BeachandMarina@att.net)



## 49th ANNUAL PARADE OF LIGHTS SCHEDULE

**Friday Dec. 12** 7 pm Dock & Harbor Business Lighting Contest

### Saturday Dec. 13

10 a.m.-4 p.m. Santa to the Sea Expo, Contest and more (MEL)

11 am-Dusk Artist Marketplace and Children's Fun Zone (MEL)

7-8 pm "It's the View" Balcony Contest Judging Here at CIWH

7 p.m. Boat Parade begins

### Sunday Dec. 14

Santa to the Sea 1/2 Marathon & 5K Fun Run

10 a.m. - 2 p.m. Farmer's Market Holiday Marketplace

7 a.m. - 1 p.m. Santa to the Sea Expo



## PARADE OF LIGHTS T-SHIRTS PRE ORDER Deadline

November 25th 3 p.m. [channelislandsharbor.org](http://channelislandsharbor.org)



## HOLD A PRIVATE PARTY IN OUR CONFERENCE ROOM

The conference room located in the Clubhouse is a great place to host special occasion or hold a private meeting.

The "room with a view" is available to residents for private meetings, parties and other functions for up to 35 guests. Reservations are made in advance through the marina office. Prices vary between \$50 to \$100 depending on the number of guests, whether alcohol is served, etc. Refundable deposits are also required and security guards may be required if alcohol is being served. The room has a full kitchen including stove and oven, microwave, refrigerator, dishwasher, private bathroom and a television. Tables and chair set up can also be arranged. Please note that the function is confined to the conference room meaning guests are not allowed to overflow into the main clubhouse or use the pool and outdoor facilities at the same time. Call the marina for an application at 985-6035 or ask Sara to email it to you. **BOOK EARLY DURING HOLIDAY SEASON**



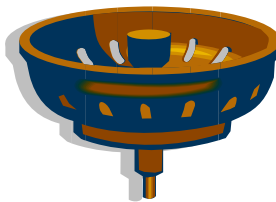
### Tip O' the Month

**HAVE YOUR WALL HEATERS CHECKED AND CLEANED ANNUALLY**

The cooler months are upon us and most residents will be using their electric wall heaters. Before you use your wall heaters, be sure to have a licensed and insured professional heating and A/C Company clean and service your wall units. Do not use the heater if anything is blocking it such as furniture, boxes, laundry, etc. and never leave the heater on when you leave your home. The wall heaters are an "exclusive use" item and any damages that occur as a result of the interior heaters are the individual owners responsibility.

## DON'T LET YOUR HOLIDAYS GO DOWN THE DRAIN!

With the holidays approaching a lot of cooking will be going on. Please remember not to put food down the garbage disposal. To avoid a holiday mishap that could prove expensive if you have to call a plumber on a holiday, please treat your kitchen sink as if there was no disposal at all. Use a strainer to avoid food scraps from going down the drain. Potato and fruit peels, rice, coffee grinds, meats, essentially any food, can and will clog the drains in the stacked units and when one drain clogs it renders all attached units without drainage until the clog can be remediated. If this happens and the problem can be tracked to your unit, you may be responsible for the entire bill to unclog the drains. Likewise for the toilets and shower drains. **If you have to think twice about whether to let it go down, DON'T!**



## New Harbor Event

### Farmers' Market Holiday Marketplace

December 7, 14, 21 from 10 am - 2pm. Come visit the Farmers' Market to experience a true holiday marketplace at Channel Islands Harbor. There will be a variety of specially crafted gifts, hand crafted jewelry, ornaments, sweets, treats and more.

## New Harbor Event

### SANTA TO THE SEA IS NOW A 2 DAY HARBOR EVENT

The Santa to the Sea Half Marathon and 5k has become an internationally recognized event. This year the race includes more activities and contests before and after the race. There will be a Expo Village at Marine Emporium Landing (the race's finish line) all day Saturday and Sunday December 13-14, with daily schedule of activities that include Santa's Village Kid Zone, contests, beer garden and vendors and displays. The Half Marathon and 2 Person Relay starts at the legendary Santa Claus statue, located along the 101 freeway and the runners follow a USATF certified course, running along the fragrant strawberry fields, through the areas of historic Oxnard decorated for the Holidays, to the beach, and finishing at Channel Islands Harbor. This year they've added a supervised 1K Kid's Run as well as a Diaper Derby and Children's Costume Contest. The Kid's Run takes place in the EXPO Village, and allows the kids to safely finish, on the race course, and in the Finish Chute. The winning baby will be awarded a trophy and be declared the "Fastest Baby at Santa to the Sea 2014" For a complete schedule of events, applications and sponsorship opportunities see the official website [www.SatnatotheSea.com](http://www.SatnatotheSea.com)



## Whale Watching Excursions - December 26 through

**April** marks the official start of the gray whale migration. Regular trips scheduled through mid-April. Departure times are listed daily on the Island Packers website. Rates start at \$37 per adult for this half day trip.

**Island Packers Gift Certificate makes a great stocking stuffer or gift!** Some of the most popular include: Whale watch ranging from \$ 37 to \$ 79 per adult, half day island wildlife cruise \$ 37 per adult, island day hike \$ 59 per adult, A camping trip to one of the five northern Channel Islands ranging \$79 up to \$ 114 per adult or purchase a specific amount. For information, reservations or to purchase gift certificates, visit [www.islandpackers.com](http://www.islandpackers.com) or call 805-642-1393.

**Due to the holidays there will not be an HOA Meeting in December**

**The Next HOA Meeting is January 22 at 7 p.m. In the Clubhouse Conference Room**  
(The Executive board meets at 6:00 p.m.)

Gold Coast Management  
[www.goldcoastmgt.com](http://www.goldcoastmgt.com)

Manager: Sarah Taylor  
Phone: 805-499-7800

[saraht@goldcoastmgt.com](mailto:saraht@goldcoastmgt.com)  
Fax: 805-499-7889

Newsletter Editor: Susan O'Brien [www.ltstheView.com](http://www.ltstheView.com) email: [BeachandMarina@att.net](mailto:BeachandMarina@att.net) **Contributions are encouraged!**